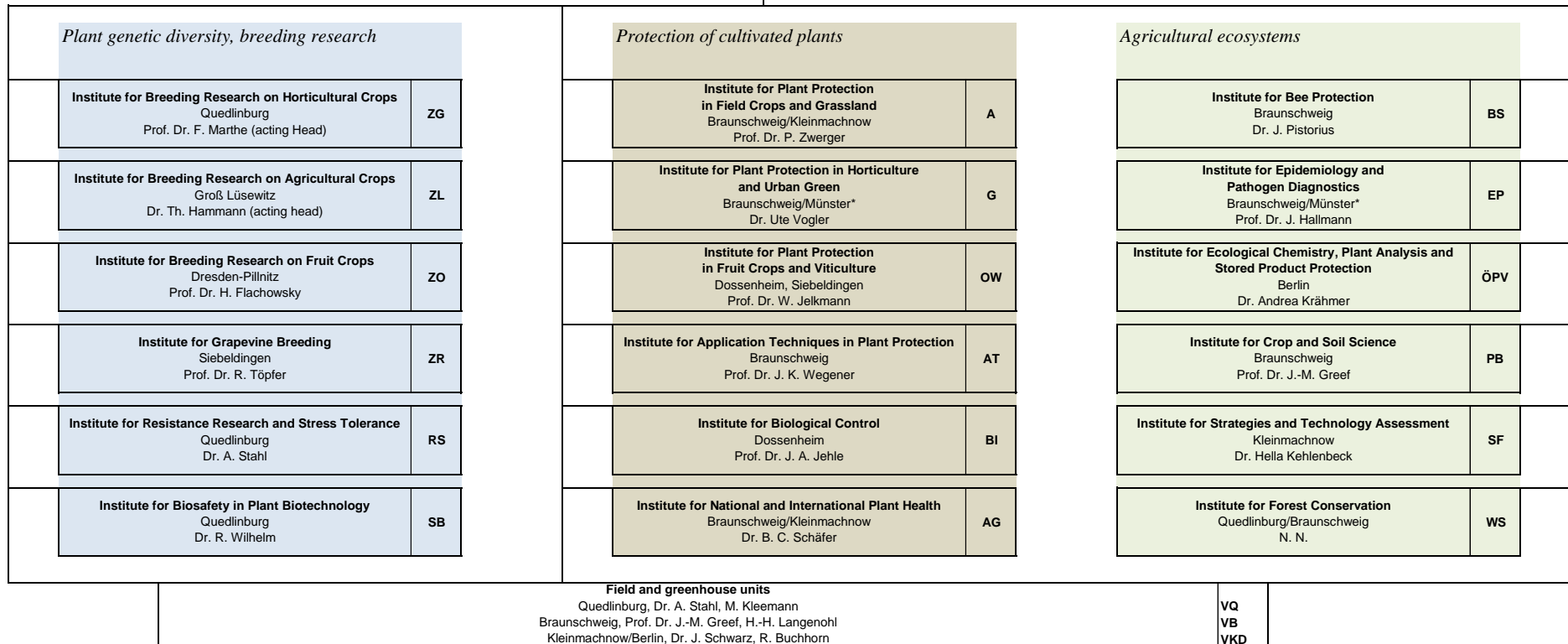
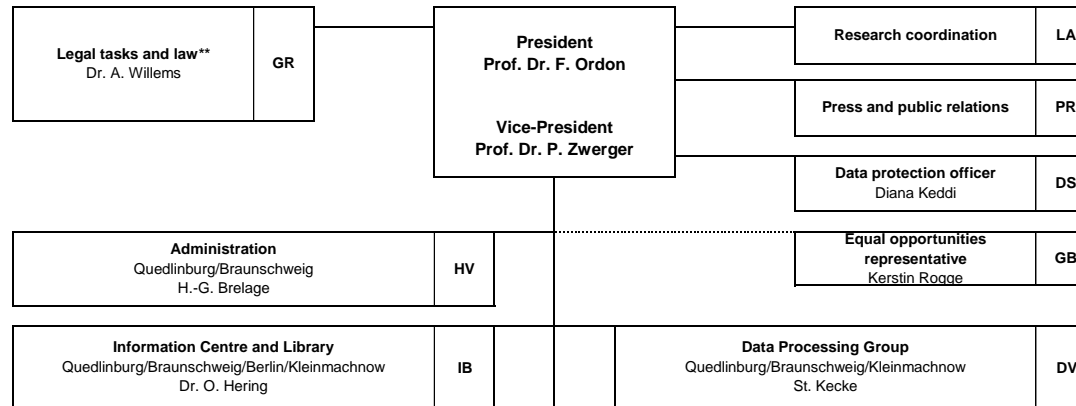


**Julius Kühn Institute, Federal Research Centre for Cultivated Plants
Quedlinburg**



| | |
|--|-----|
| JKI staff council Chairman R. Heinke | GPR |
|--|-----|

| | |
|---|-----|
| Representative for employees with disabilities Ines Tessenow-Heinke | GSV |
|---|-----|

* in italics: JKI sites scheduled to close

** comprises: evaluation of plant protection products and biostimulants, legal counselling